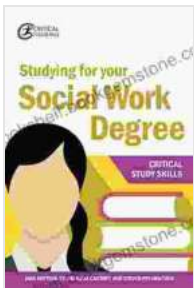


# **Critical Study Skills for Your Social Work Degree: Unlocking Pathways to Success**

Embarking on a social work degree unveils a transformative journey of personal and professional growth. It challenges you to delve deeply into societal issues, develop a compassionate understanding of human behavior, and acquire the skills necessary to empower individuals and communities. Among these essential skills, critical study skills stand out as the cornerstone of academic excellence and future practice. By honing these skills, you will not only excel in your coursework but also cultivate the analytical, reflective, and discerning mindset required to navigate the complex landscape of social work.

## **1. Active Reading: Delve into the Depths of Text**



## Studying for your Social Work Degree (Critical Study Skills) by Jane Bottomley

★★★★☆ 4.7 out of 5

Language : English  
File size : 5045 KB  
Text-to-Speech : Enabled  
Screen Reader : Supported  
Enhanced typesetting : Enabled  
Word Wise : Enabled  
Print length : 218 pages

FREE

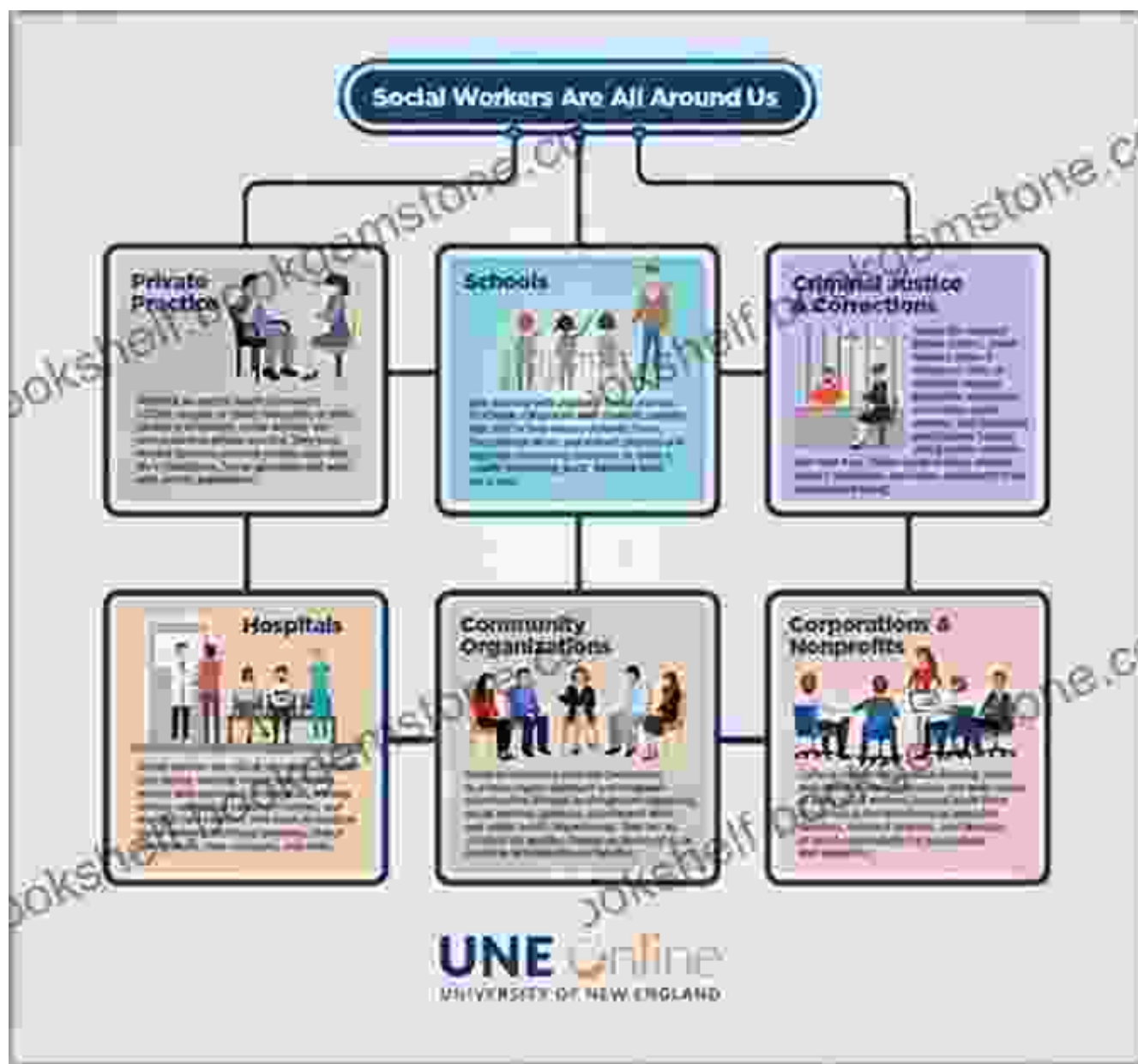
DOWNLOAD E-BOOK



Active reading transcends mere word recognition; it involves engaging in a dynamic dialogue with the text. As you read, question the author's

arguments, identify key concepts, and make connections to your prior knowledge. Highlight important passages, jot down annotations in the margins, and summarize sections to enhance comprehension and retention. Utilize techniques like SQ3R (Survey, Question, Read, Recite, Review) to foster deeper engagement and recall.

## 2. Critical Thinking: Unraveling the Web of Complexity



Critical thinking empowers you to question assumptions, evaluate evidence, and form well-reasoned judgments. In social work, this skill is paramount for analyzing case studies, interpreting research findings, and making ethical decisions. Practice critical thinking by challenging your own beliefs, seeking out diverse perspectives, and engaging in structured discussions with peers or professors.

### **3. Note-Taking: Capturing Knowledge, Shaping Understanding**



Effective note-taking is an art form that transforms lectures and readings into valuable study resources. Develop a system that suits your learning style, whether it's outlining, mind mapping, or using colors and symbols. Capture key points, definitions, examples, and any insights that resonate

with you. Regularly review your notes to reinforce learning and identify areas for further exploration.

#### 4. Information Literacy: Navigating the Maze of Sources

### What types of sources can I use?

	Print	Online	Purpose
Books	+	+	Extensive coverage of one topic or theme.
Journals	+	+	Articles that report research.
Magazines	+	+	Articles that report news or trends.
Newspapers	+	+	Current events and news.
Websites		+	Personal, Corporate, Informational.
Blogs		+	Online journals: personal, corporate, informational.
Podcasts		+	Personal, corporate, informational.
Video		+	Entertainment, news, instructional.

Social work practice demands a comprehensive understanding of the vast literature that informs the field. Develop information literacy skills to effectively locate, evaluate, and utilize research articles, books, and online resources. Learn how to use databases, search engines, and library catalogs to access credible and relevant information. Critically analyze sources to determine their reliability, validity, and potential biases.

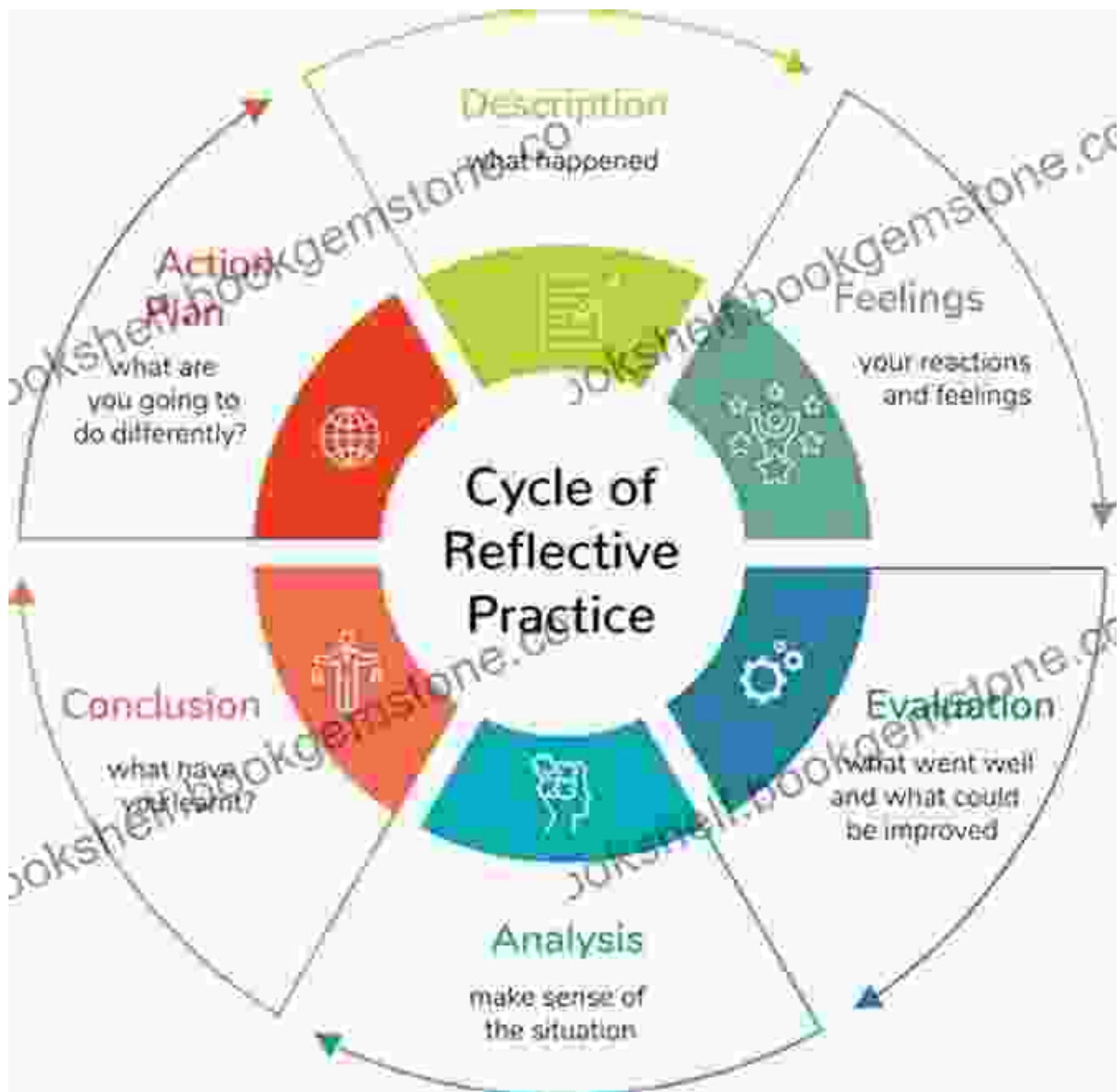
#### 5. Time Management: Mastering the Rhythm of Study and Life



Time management is crucial for balancing the demands of coursework, field placements, and personal responsibilities. Create a realistic study schedule that allocates dedicated time for reading, note-taking, and assignments. Prioritize tasks based on importance and urgency, and don't hesitate to seek support from professors, classmates, or academic advisors when needed. Remember that effective time management not only promotes academic success but also fosters a healthy work-life balance.

## **6. Self-Reflection: Embracing the Journey of Growth**





Self-reflection is an invaluable tool for both personal and professional development. Regularly take time to evaluate your study habits, strengths, and areas for improvement. Identify strategies that enhance your learning and discard those that hinder progress. Seek feedback from professors, peers, and supervisors to gain insights into your performance and identify areas for growth.

## 7. Collaboration: Harnessing the Power of Teamwork



Social work is an inherently collaborative field. Engage in study groups with classmates to discuss course materials, share perspectives, and support each other's learning. Participate in class discussions and ask questions to deepen your understanding and foster a sense of community. Remember that collaboration not only enhances academic outcomes but also develops essential interpersonal skills for future practice.

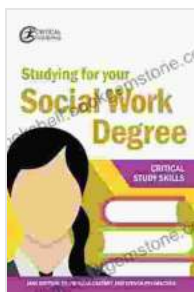
### **: Unlocking Your Potential as a Social Work Professional**

By cultivating these critical study skills, you will not only excel in your social work degree program but also lay the foundation for a successful career. These skills empower you to engage with course material in a meaningful way, develop a deep understanding of societal issues, and make informed



decisions that will positively impact the lives of others. Embrace the journey of self-discovery and continuous improvement, and you will emerge from your social work degree as a confident, compassionate, and transformative agent of change.

Remember, the pursuit of knowledge is an ongoing endeavor. As you progress through your degree and beyond, embrace new learning opportunities, seek out mentors and role models, and never cease to challenge your assumptions and expand your horizons. By ng so, you will remain at the forefront of social work practice, equipped with the critical study skills that will guide you towards a fulfilling and impactful career.



## Studying for your Social Work Degree (Critical Study Skills) by Jane Bottomley

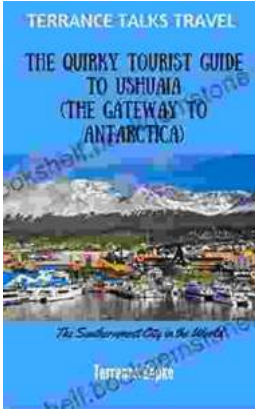
★★★★☆ 4.7 out of 5

Language	: English
File size	: 5045 KB
Text-to-Speech	: Enabled
Screen Reader	: Supported
Enhanced typesetting	: Enabled
Word Wise	: Enabled
Print length	: 218 pages

FREE

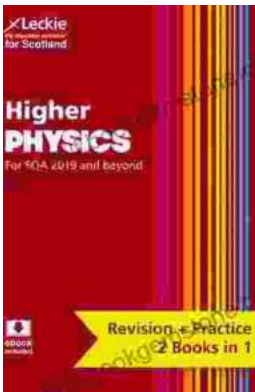
DOWNLOAD E-BOOK





## The Quirky Tourist Guide To Ushuaia: The Gateway To Antarctica

Ushuaia, the southernmost city in the world, is a fascinating place to visit. It's a...



## Preparation and Support for Teacher Assessment: Leckie Complete Revision Practice

Teacher assessment is an important part of physical education (PE) in the United Kingdom. It is used to assess students' progress and achievement in PE, and to provide...